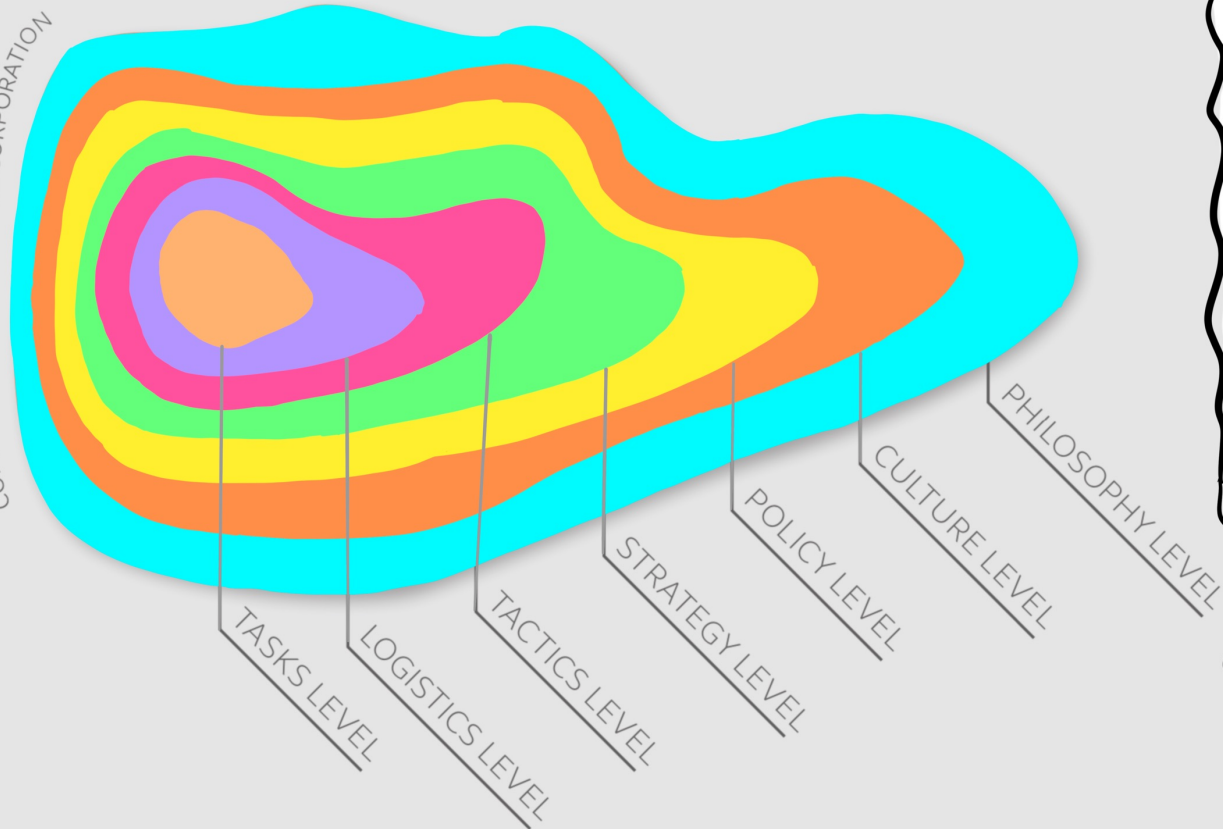




COPYRIGHT 1984 MG TAYLOR CORPORATION



The seven Vantage Points hold mutual, feedback-driven influence over one another. It is possible to change one plane through one of the others. In fact, real change cannot be achieved without involving the other planes. The Vantage Points are meant to be managed and designed-used as templates and auditing tools. The Vantage Points break down into three overlapping zones for special types of management emphasis.

Design and manage..

..Philosophy, Culture and Policy to steer evolution.

..Policy, Strategy and Tactics to steer operational and structural support.

..Tactics, Logistics and Tasks to steer the work to be done.

Insights from the Interview conversations have been aligned to the various vantage points and depicted visually in the next few slides.

These can guide the themes and topics to focus our workshop flow.

e.g., the Philosophy of PRANA is fundamental to establishing a well defined WHY we are in this together



VANTAGE POINT - PHILOSOPHY

the fundamental --usually hidden-- beliefs that unite the components of an Enterprise, enabling them to act as a cohesive whole. Properly applied, philosophy enables both innovation and stability.

..a **BROADER PICTURE**

REGENERATIVE AGRICULTURE SYSTEMS

PIECES to BUILD ON

IDENTIFY and ACT upon the MISSING LINKS

..YET UNIQUE

REPLICABLE ACROSS GEOs

a **WELL DEFINED WHY**

IMMEDIATE NEEDS

5 to 10 YEAR EFFORT

LONG TERM OUTLOOK

WHAT IT MEANS to US & as a TEAM...

IMBIBING the SPIRIT BEHIND the ACTION

TRANSFORMATIONAL

SUSTAINABLE

VISION

GROUND REALITY

A STRATEGY that WORKS

PAYMENT SYSTEMS

CARBON FOOTPRINT

INTERNATIONAL BANDWIDTH

VANTAGE POINT - CULTURE

defines the various components of the Enterprise and their relationship to one another in action. Culture also encompasses standard behaviors of these components-- behaviors which are manifestations of the Philosophy.


BUY-IN TO OUR STRATEGY



PLAN with *only* TRUTH

OWNERSHIP

TRUST • in PEOPLE
• in PROCESS



TRUST HERE

TRUST HERE

TRUST HERE

GLOBAL TEAM



GLOBAL MINDSET


OPEN MIND

TRANSPARENCY

RESPECT for DIVERSE OPINIONS to CO-EXIST



SAFE SPACES for OPEN CONVERSATIONS




BOLD THINKING & VOICING

THIS IS WHAT I THINK


FORTHRIGHT



ONE TEAM



DEEP & TRUE COLLABORATION



EMPOWERED INDIVIDUALS & TEAM!

ENERGIZE THEM

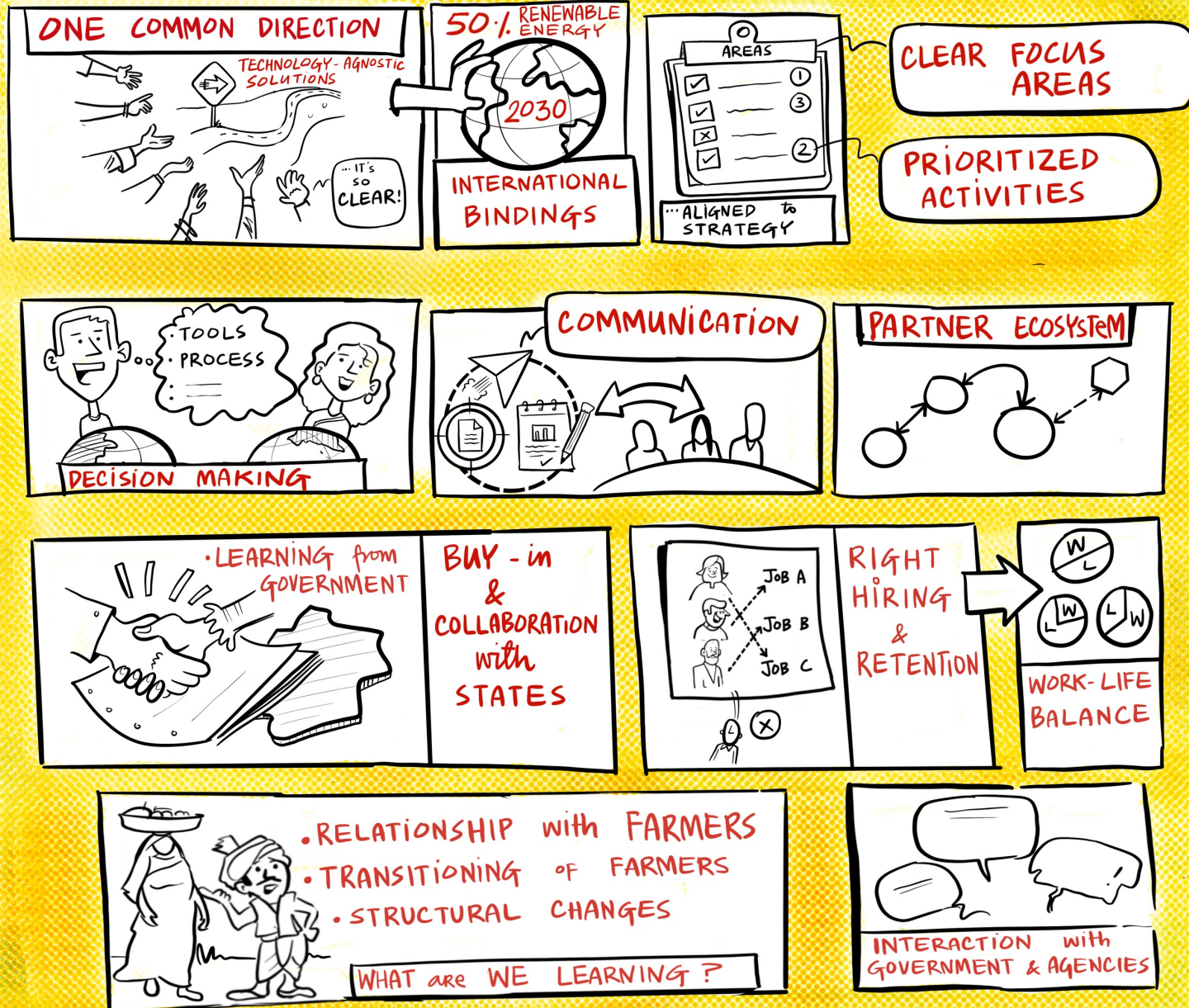
BUILD CONNECTIONS

CLEARING ISSUES

COMMUNICATION NORMS

VANTAGE POINT - POLICY

At the broadest level, Policy refers to statements of purpose, intent and goals. At a narrower level, Policy can specify boundaries on the design and prosecution of Strategy, Tactics, Logistics and Tasks. Policy states the rules of the game.



VANTAGE POINT - STRATEGY

Strategy is the organization, disposition and direction of large scale forces over space and time to achieve the objectives of Policy, maintain homeostasis in a competitive and cooperative environment, and manage growth. Also the set of recognized "patterns of play" known or suspected to produce favorable results when implemented.

NOT AN ACADEMIC EXERCISE

ADDRESS GROUND REALITIES in STRATEGY CREATION

INVOLVE FARMERS as CONSULTANTS to LEVERAGE their WORLD VIEW

CRITICAL PARTNERSHIPS

ONE CONSERVANCY

WAY AHEAD VIEWER

FUTURE READY

CAMPAIGN FLAVOURED!

OUR INFLUENCING POLICIES

ALIGNED to GOVERNMENT PLANS

COMMON UNDERSTANDING of STRATEGY!

PAU

KNOWLEDGE TECHNOLOGIES

INSIGHTS

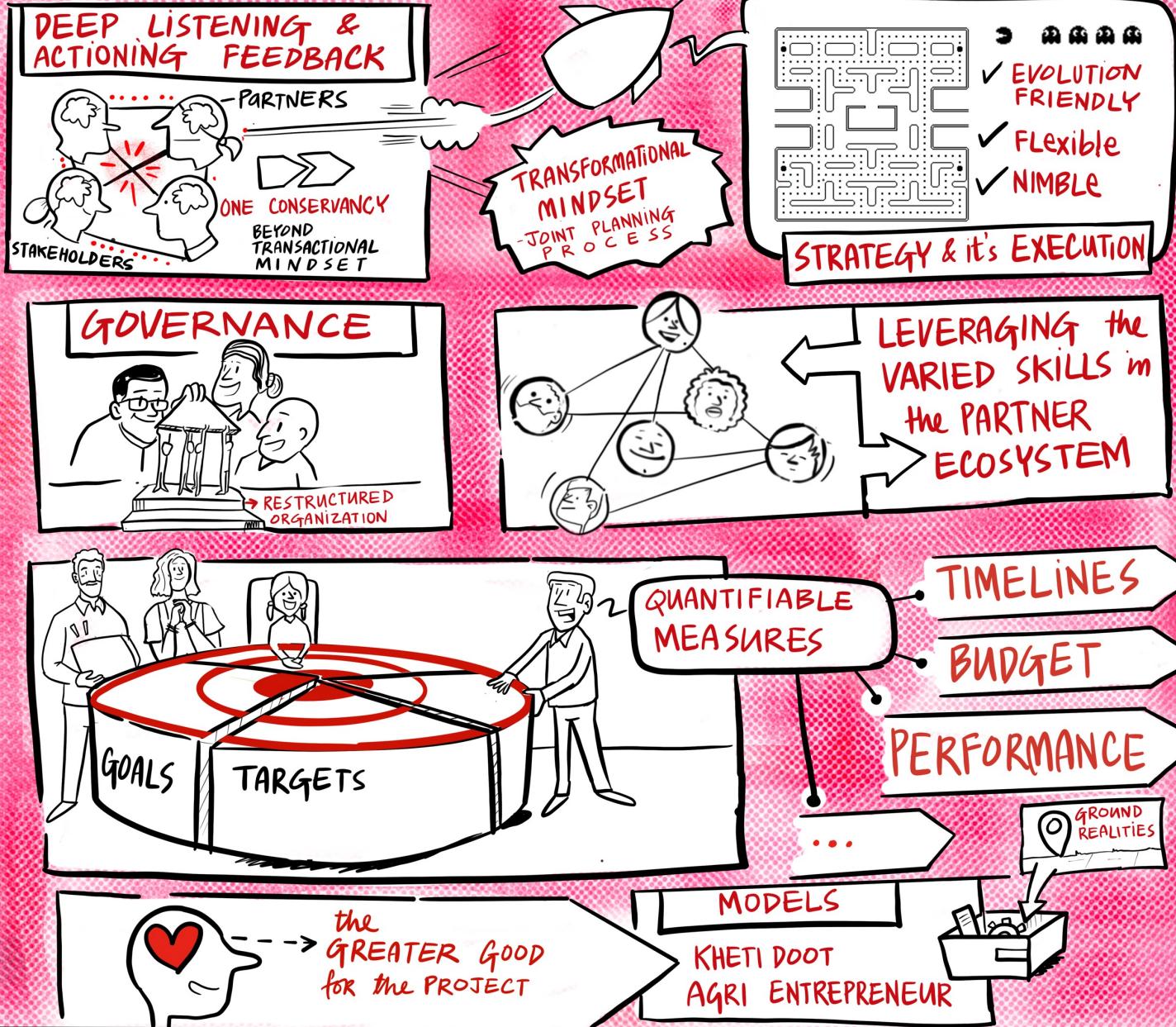
STRATEGY

PARTNERSHIP LEVERAGE



VANTAGE POINT - TACTICS

Tactics is the art of matching the resources of Logistics with Strategy and deploying these effectively and efficiently in the game



VANTAGE POINT - LOGISTICS

Logistics comprises all issues concerning resources, energy and knowledge, and the mechanics of their distribution and storage throughout the Enterprise.

Extension & IMPLEMENTATION

TOOLS DATA

EXECUTION PLAN

LAST MILE REACH MODEL

INSIGHTS

KNOWLEDGE

TECHNOLOGY

SKILLS

EXPERIENCE

LEVERAGE PARTNERS & ECOSYSTEM CAPABILITIES

PRIORITIZE WORK

ACCELERATED WAY OF WORKING !!

A WHOLESOME LOGISTICS PLAN

WAY FORWARD

an all-purpose solution

TECH-AGNOSTIC PROCESS & SOLUTIONS

TRANSFORMATIONAL THINKING & DOING

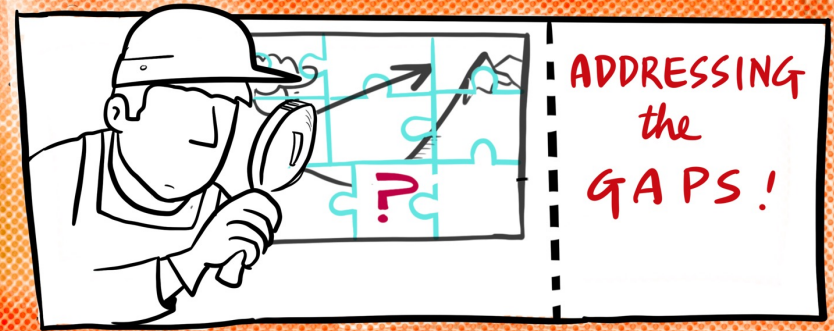
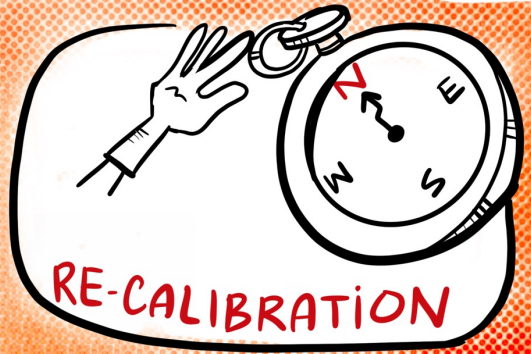
STRENGTHEN SUPPLY CHAIN

BIO METHANE PLANT

- COMMISSIONING
- MAINTENANCE

VANTAGE POINT - TASKS

the work to be done and how it's actually done. Chopping wood and carrying water. The way a tool is used and treated, of course speaks plainly of the philosophy and culture of the user.



TOGETHER WE CAN

- PROCESS → TRUST
- COMPLIANCE
- ORGANIZATION STRUCTURE
- GOVERNANCE
- SOCIAL AGREEMENTS



CLEAR UNDERSTANDING OF ROLES & RESPONSIBILITIES

